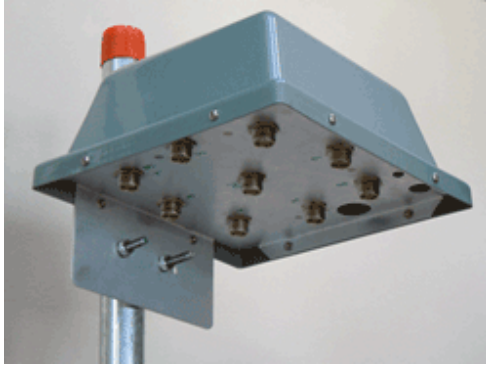




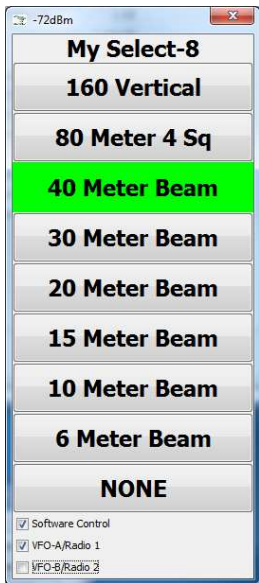
Select-8 Wireless Remote Coax Switch



Complete Freedom from control cable and control boxes
Operate from any computer or over the internet

BENEFITS

- Eliminates control cables and tethered control boxes
- User defined on-screen controls for your station antennas
- Allows user sharing among separate operating positions
- Remote access via internet for remote stations
- Eliminates potential for conducting unwanted RF and lightning damage into the shack via control cable



SPECIFICATIONS *

8 Antenna Ports

- Select Individually
- Combinations for phased arrays
- Unselected Ports Grounded

Power handling

- Up to 4 KW
- 2.5 KW @ 3:1 VSWR

Frequency Range

- 1.8 – 54 MHz

Insertion VSWR

- 1.8 – 30 MHz < 1.04:1
- 50 MHz < 1.1:1

Unselected Port Isolation (typ)

- 1.8-4.0 85 dB
- 7 MHz 70 dB
- 14 MHz 60 dB
- 28 MHz 48 dB
- 50 MHz 40 dB

FEATURES/OPTIONS

Power Options (12 VDC)

- Local supply at Select-8
- Power over Coax (POC) (requires DC Injector)

Wireless Control Antenna

- Std internal ¼ wave
- Optional RP-SMA connection for external antenna

Outdoor or Indoor Mounting

- UV Resistant gray PVC cover
- All SS hardware
- Heavy duty tower leg mounting hardware

Green Heron Quality and Support

- 16 amp enclosed relays
- Amphenol Connectors